

This web site uses cookies to improve your experience. By viewing this content, you are accepting the use of cookies. [To learn more: Click Here](#) [Close this message](#)

[Home](#)

### Projects

#### Arduino

- [BMP280 Pressure Sensor](#)
- [MAX7219 8x8 Matrix](#)
- [DHT22 DHT21 Humidity](#)
- [SSD1306 OLED](#)
- [Logic Level Converter](#)
- [Hitachi HD44780](#)
- [MAX6675 0 to 1024 DegC](#)
- [DS18B20 Temperature](#)
- [74HC595 I/O Expander](#)
- [MCP23017 I/O Expander](#)

#### Ebooks

[Digital download eBooks](#)

#### PIC

- [LED Dot Matrix 8x8 Direct drive](#)
- [LCD Volt Meter](#)
- [Serial LCD](#)
- [LCD Keypad](#)
- [Frequency Counter LCD](#)
- [Frequency Counter 7seg](#)
- [DS1307 Clock](#)
- [Binary Clock 8x8 matrix](#)
- [Infrared Receiver](#)
- [A PIC 12F675 tutorial.](#)
- [PIC Projects](#)

[Project Ideas](#)

#### Interfaces

- [SPI Interface](#)
- [I2C Interface](#)

#### PIC Resources

- [PIC Introduction](#)
- [PIC ICSP](#)
- [Programmer Types](#)

#### Resources

- [Tips & Techniques](#)
- [PIC Tutorials](#)
- [Microcontroller Blog](#)
- [Site map](#)

**Become a subscriber (Free)**

Join 29,000 other subscribers to receive subscriber sale discounts and other free resources.

Name:

E-Mail:

[JOIN NOW](#)

Don't worry -- your e-mail address is totally secure. I promise to use it **only** to send you MicroZine.

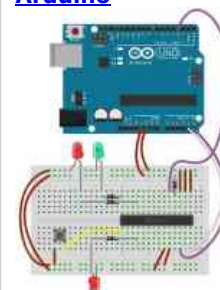
Visit our Facebook Page:

[Click Here](#)



#### Recent Articles

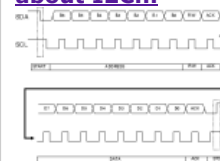
[How to use the MCP23017 I/O Expander on the Arduino](#)



How to use the MCP23017 to increase your I/O by 16 pins (or more) and use its interrupt system.

[Read more](#)

[The Essential I2C Tutorial: All you need to know about I2C...](#)



How to use I2C. In this tutorial you will learn all about the 2 wire I2C serial protocol. Learn how easy it is to use, how it works and when to use it...

[Read more](#)

[How RS232 Works: The Easy Guide to RS232.](#)



How RS232 Works: What exactly is RS232 and how

## I2C tutorial.

In this **I2C tutorial** you will learn all about the 2 wire I2C serial protocol; How easy it is to use, how it works and when to use it...

The I2C protocol is a very useful serial communication protocol. This popular system is used in a huge range of chips - just a few examples from this site include the DS1307 (RTC), SSD1306 (OLED Display), DS23017 (Serial expander). It allows you to connect many devices to a single set of two wires and then communicate individually with each device with which you can send and receive data.

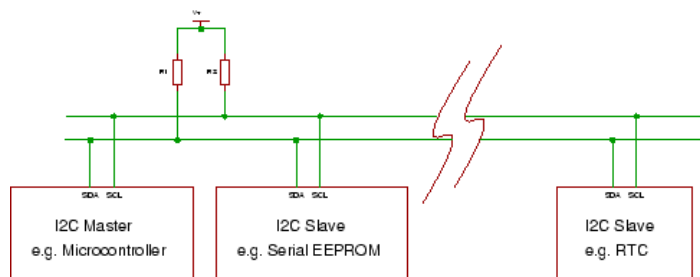
**Warning:** The protocol is designed for single board communication it is not a long distance comms. system. You can find instances (horror stories) of people desinging a multi drop inter office comms system with I2C extenders - just don't do it - it ends in tears!

This I2C tutorial shows you how the I2C protocol works at the physical bit level discussing single master mode (a single controlling device) which is the most common use for I2C in a small system.

I<sup>2</sup>C (pronounced I-squared-C) created by Philips Semiconductors and commonly written as 'I2C' stands for Inter-Integrated Circuit and allows communication of data between I2C devices over two wires. It sends information serially using one line for data (SDA) and one for clock (SCL).

The other acronym for I2C is IIC (this one is actually the correct one) and means "Inter IC communication" - showing that it is intended for chip-to-chip communication.

*Note: You can find Master mode soft I2C routines in the [DS1307 RTC](#) project.*



## Master and slave

The phillips I2C protocol defines the concept of master and slave devices. A master device is simply the device that is in charge of the bus at the present time and this device controls the clock and generates START and STOP signals. Slaves simply listen to the bus and act on controls and data that they are sent.

The master can send data to a slave or receive data from a slave - slaves do not transfer data between themselves.

This web site uses cookies to improve your experience. By viewing this content, you are accepting the use of cookies. [To learn more: Click Here](#) [Close this message](#)

- [Articles](#)
- [Forum](#)
- [Books](#)

Multi master operation is a more complex use of I2C that lets you have different controlling devices on the same bus. You only need to use this mode if you have more than one microcontroller on the bus (and you want either of them to be the bus master).

Multi master operation involves arbitration of the bus (where a master has to fight to get control of the bus) and clock synchronisation (each may use a different clock e.g. because of separate crystal clocks for each micro).

*Note: Multi master is not covered in this I2C tutorial as the more common use of I2C is to use a single bus master to control peripheral devices e.g. serial memory, ADC, RTC etc.*

## Data and Clock

The I2C interface uses two bi-directional lines meaning that any device could drive either line. In a single master system the master device drives the clock most of the time - the master is in charge of the clock but slaves can influence it to slow it down (See Slow Peripherals below).

The two wires must be driven as open collector/drain outputs and must be pulled high using one resistor each (that is one resistor per I2C line i.e. for data and clock) - this implements a 'wired NOR function' - any device pulling the wire low causes all devices to see a low logic value - for high logic value all devices must stop driving the wire.

*Note : If you use I2C you can not put any other (non I2C) devices on the bus as both lines are used as clock at some point (generation of START and STOP bits toggles the data line). So you can not do something clever such as keeping the clock line inactive and use the data line as a button press detector (to save pins).*

You will often find devices that you realise are I2C compatible but they are labelled as using a '2 wire interface'. The manufacturer is avoiding paying royalties by not using the words 'I2C'!

There are two wires (three if you include ground!, and four if you also include power!) - but power and ground are taken as given i.e. they are available on a pcd as needed so don't really count.

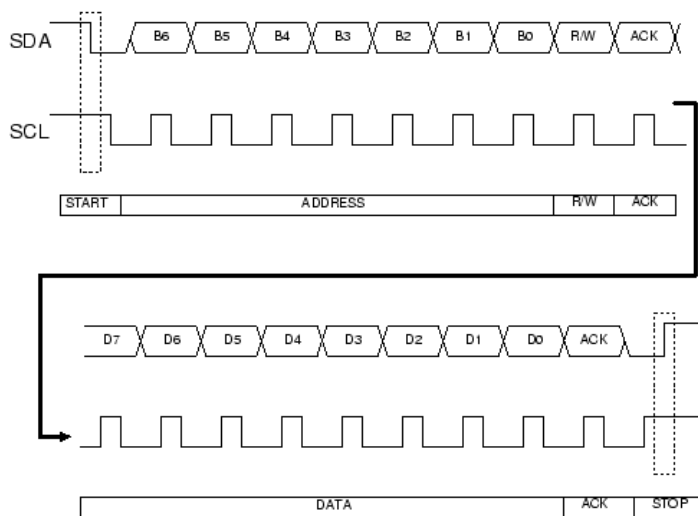
**Note:** For a true 1 wire protocol that is powered from the signal line see the "One-Wire" protocol (an example on this site is the DS18B20) - this one also ignores the required ground return wire (so it is really a two wire system). This protocol provides a long distance long wire multidrop system, albeit at a slower speed than I2C.

## I2C Tutorial: Signals

SDA : Serial Data  
SCL : Serial Clock

## I2C Tutorial: Typical signalling transaction

I2C Tutorial : Typical SDA and SCL signals



## Speed

Standard clock speeds are 100kHz and 10kHz but the standard lets you use clock speeds from zero to 100kHz and a fast mode is also available (400kHz - Fast-mode). An even higher speed (3.4MHz - High-speed mode) for more demanding applications - The mid range PIC won't be up to this mode yet!

[Read more](#)

**Sign up for MicroZine:**  
"The" Microcontroller  
Newsletter

Enter your first Name and primary email address in the form below:

And receive absolutely **FREE** a full project for:

**"Measuring Analogue Voltages Without An ADC"**

(Using only **one** pin).

[Instant Download: You Can Get It Right Now](#)

**Warning:** This project could be **Removed** at any time.

It will **NOT** be available indefinitely SO To avoid disappointment get it:

**Now**

Name:

E-Mail:

[FREE Access Here](#)

Don't worry -- your e-mail address is totally secure. I promise to use it **only** to send you MicroZine

Remember this is a project with full description and fully debugged C Source code - and it's not available from the main website.

**You can only get it through this newsletter.**

To get exclusive access Enter your first name Name and primary email address Now in the form above.:

But wait !

BA

This web site uses cookies to improve your experience. By viewing this content, you are accepting the use of cookies. [To learn more: Click Here](#) [Close this message](#)

**Note:** Even if you run an I2C peripheral at a high speed the overall data rate depends on how fast you can push data into the internal I2C module and that depends on the processor speed.

You'll receive more free and exclusive reports as well as site information and site product updates

A slow slave device may need to stop the bus while it gathers data or services an interrupt etc. It can do this while holding the clock line (SCL) low forcing the master into the wait state. The master must then wait until SCL is released before proceeding.

Scroll up to the form above and sign up **NOW**. Don't forget it's **FREE** and if you don't like it, you can unsubscribe at any time.

## Data transfer sequence

A basic Master to slave read or write sequence for I2C follows the following order:

### I2C Tutorial : I2C basic command sequence.

- 1. Send the START bit (S).
- 2. Send the slave address (ADDR).
- 3. Send the Read(R)-1 / Write(W)-0 bit.
- 4. Wait for/Send an acknowledge bit (A).
- 5. Send/Receive the data byte (8 bits) (DATA).
- 6. Expect/Send acknowledge bit (A).
- 7. Send the STOP bit (P).

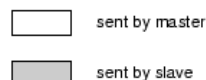
### I2C Tutorial : end of I2C basic command sequence.

Note: You can use 7 bit or 10 bit addresses.

The sequence 5 and 6 can be repeated so that a multibyte block can be read or written.

## Data Transfer from master to slave

I2C Tutorial : Instruction sequence data from master to slave



A master device sends the sequence S ADDR W and then waits for an acknowledge bit (A) from the slave which the slave will only generate if its internal address matches the value sent by the master. If this happens then the master sends DATA and waits for acknowledge (A) from the slave. The master completes the byte transfer by generating a stop bit (P) (or repeated start).

## Data transfer from slave to master

I2C Tutorial : Instruction sequence data from slave to master



A similar process happens when a master reads from the slave but in this case, instead of W, R is sent. After the data is transmitted from the slave to the master the **master** sends the acknowledge (A). If instead the master does not want any more data it must send a not-acknowledge which indicates to the slave that it should release the bus. This lets the master send the STOP or repeated START signal.

## Device addresses

Each device you use on the I2C bus must have a unique address. For some devices e.g. serial memory you can set the lower address bits using input pins on the device others have a fixed internal address setting e.g. a real time clock DS1307. You can put several memory devices on the same IC bus by using a different address for each.

Each device manufacturer is assigned a set of addresses so devices should not conflict with each other.

Note: The maximum number of devices is limited by the number of available addresses (and you need non-conflicting addresses) and by the total bus capacitance (maximum 400pF).

## General call

The general call address is a reserved address which when output by the bus master should address all devices which should respond with an acknowledge. Its value is 0000000 (7 bits)

[Click Here Now](#) to use the form above to get your **Valuable** information absolutely free.

### Readers Comments

*"I wanted to thank you so so so much for all the information you have provided in your site it's*

**SUPERB** and **FANTASTIC**."

- Ranish Pottath

*"This site really is the best and my favorite. I find here many useful projects and tips."*

- Milan

bursach<at>gmail.com<

*"Awesome site, very, very easy and nice to navigate!"*

- Matt

matt\_tr<at>wolf359.cjb.net

[Learn Microcontrollers](#)

**"Interested in Microcontrollers?"**

Sign up for The Free 7 day guide:

[FREE GUIDE :](#)  
[CLICK HERE](#)

*"I am a newbie to PIC and I wanted to say how great your site has been for me."*

- Dave

de\_scott<at>bellsouth.net

*"Your site is a great and perfect work. congratulations."*

- Suresh

This web site uses cookies to improve your experience. By viewing this content, you are accepting the use of cookies. [To learn more: Click Here](#) [Close this message](#)

**I2C Tutorial : Reserved addresses.**

0000 000 1 START byte - for slow micros without I2C h/w  
0000 001 X CBUS address - a different bus protocol  
0000 010 X Reserved for different bus format  
0000 011 X Reserved for future purposes  
0000 1XX X Hs-mode master code  
1111 1XX X Reserved for future purposes  
1111 0XX X 10-bit slave addressing

**I2C Tutorial : End of reserved addresses.**

Most of these are not that useful for PIC microcontrollers except perhaps the START byte and 10 bit addressing.

yan100.com

"I couldn't find the correct words to define yourweb site.

Very useful, uncovered, honest and clear.

Thanks so much for your time and works. Regards."

- Anon

## START (S) and STOP (P) bits

START (S) and STOP (P) bits are unique signals that can be generated on the bus but **only** by a bus master.

Reception of a START bit by an I2C slave device resets its internal bus logic. This can be done at any time so you can force a restart if anything goes wrong even in the middle of communication.

START and STOP bits are defined as rising or falling edges on the data line while the clock line is kept high.

**I2C Tutorial : text definition of START and STOP signals**

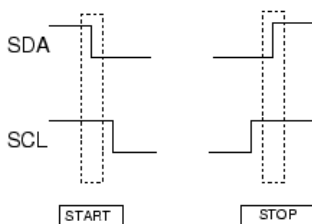
START condition (S)	SCL = 1, SDA falling edge
STOP condition (P)	SCL = 1, SDA rising edge

**I2C Tutorial : end of text definition of START and STOP signals**

The following diagram shows the above information graphically - these are the signals you would see on the I2C bus.

**I2C Tutorial : end of definition of START and STOP signals**

I2C Tutorial : START (S) and STOP (P) bits.



**I2C Tutorial : end of definition of START and STOP signals**

*Note : In a single master system the only difference between a slave and a master is the master's ability to generate START and STOP bits. Both slave and master can control SDA and SCL.*

## Repeated START (Sr)

This seems like a confusing term at first as you ask yourself why bother with it as it is functionally identical to the sequence :

S ADDR (R/W) DATA A P

The only difference is that for a repeated start you can repeat the sequence starting from the stop bit (replacing the stop bit with another start bit).

S ADDR (R/W) DATA A **Sr** ADDR (R/W) DATA A P

and you can do this indefinitely.

*Note: Reception of both S or Sr force any I2C device reset its internal bus logic so sending S or Sr is really resetting all the bus devices. This can be done **at any time** - it is a forced reset.*

The main reason that the Sr bit exists is in a multi master configuration where the current bus master does not want to release its mastership. Using the repeated start keeps the bus busy so that no other master can grab the bus.

Because of this when used in a Single master configuration it is just a curiosity.

## Data

This web site uses cookies to improve your experience. By viewing this content, you are accepting the use of cookies. [To learn more: Click Here](#) [Close this message](#)

III between each block.

Each data byte is transmitted MSB first including the address byte.

To allow START and STOP bit generation by the master the data line (SDA) must not be changed while the clock (SCL) is high - it can only be changed when the clock is low.

## Acknowledge

The acknowledge bit (generated by the receiving device) indicates to the transmitter that the data transfer was ok. Note that the clock pulse for the acknowledge bit is always created by the bus master.

The acknowledge data bit is generated by either the master or slave depending on the data direction. For the master writing to a slave (W) the acknowledge is generated by the slave. For the master receiving (R) data from a slave the master generates the acknowledge bit.

### I2C Tutorial : Definition of ACK bits

Acknowledge	0 volts
Not acknowledge	High volts

### I2C Tutorial : End of definition of ACK bits

## ACK data master --> slave

In this case the slave generates the acknowledge signal.

When a not-acknowledge is received by the bus master the transfer has failed and the master must generate a STOP or repeated START to abort the sequence.

## ACK data slave --> master

In this case the master generates the acknowledge signal.

Normally the master will generate an acknowledge after it has received data but to indicate to the slave that no more data is required on the last byte transfer the master must generate a 'not-acknowledge'. This indicates to the slave that it should stop sending data. The master can then generate the STOP bit (or repeated START).

## General Call

The general call function is a specialised command that must be accepted by all devices on the bus. It allows a master device to communicate to all devices at the same time - giving them some data. Perhaps you would use this to command a software reset in the case of a watchdog timeout in the processor.

## I2C Tutorial : Specifics for the 16F88

### Pin configuration

To use the I2C mode in the 16F88 the SDA and SCL pins must be initialised as inputs (TRIS bit = 1) so that an open drain effect is created. By setting them as inputs they are not driving the wires and an external pull up resistor will pull the signals high.

### 16F88 Slave mode

The 16F88 fully implements all slave functions except general call.

- Full slave mode

The general call function does not really matter as it is quite specialised commanding all devices on the bus to use some data.

A low output is generated by driving the signal line low and changing the pin direction to an output. A high output is generated by changing the pin direction to an input so that the external resistor pulls the signal high.

In slave mode this action is done for you by the SSP module (the outputs of the register at SDA and SCL are driven low automatically - regardless of the state of the register value).

### 16F88 Master mode

Basically there is very limited master mode functionality.

There are two elements that are provided:

- Interrupts

This web site uses cookies to improve your experience. By viewing this content, you are accepting the use of cookies. [To learn more: Click Here](#) [Close this message](#)

## 16F88 Interrupts

There are two interrupts that activate on reception of either a START or STOP condition. These two interrupts are only useful in a multi master mode system where it is necessary for the non-master device to detect the start and stop conditions. So for a single master system they are of no use at all!

## 16F88 Pin control

Note When the SSP module is active SDA and SCL output are always set at zero regardless of the state of the register values. So all you have to do is control the port direction.

**In master mode (16F88) SDA and SCL must be controlled using software.**

## I2C Tutorial : Specifics for 16F877A

It does it all for you!

- Full master mode.
- Full slave mode.
- Full general call.

*Note: If you want a chip with full master and slave mode operation look for the MSSP module in a PIC chip e.g. 16F877A - then you won't need more software - just enough to drive the module.*

## PIC Project Examples

[DS1307](#) Real time clock (bit banged I2C).

## Arduino Projects Examples

[BMP280](#) Pressure sensor

[MCP23017](#) IO expander.

---

Jump from [I2C Tutorial](#) to  
Best-microcontroller-projects home page

[Privacy Policy](#) | [Contact](#) | [About Me](#)

[Site Map](#) | [Terms of Use](#)

Copyright © 2005-2017 Best-Microcontroller-Projects  
All Rights Reserved.  
No reproduction without permission.